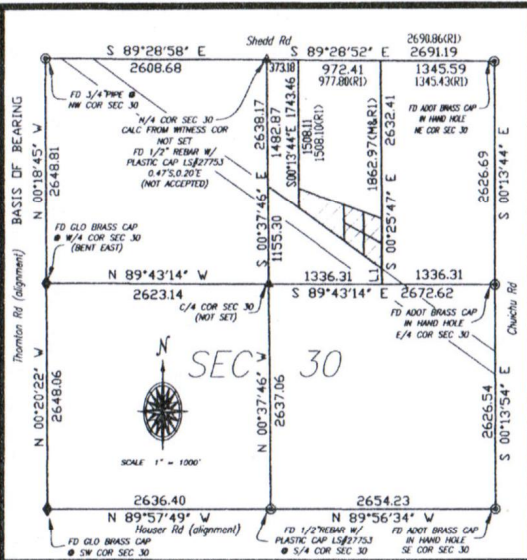


RECORD OF SURVEY



LI S 00°25'47" E 183.77

- ▲ = SET 5/8" REBAR W/ ALUMINUM CAP RLS #37512 (UNLESS OTHERWISE NOTED)
- ⊙ = FOUND MONUMENT AS NOTED
- ◆ = FOUND U.S.G.L.O. MONUMENT AS NOTED
- _{CO} = CLEANOUT
- ⊙ = WELL
- P₂ = POWER POLE
- = FENCE
- = ELECTRIC METER
- R1 = RECORDED DISTANCE PER BOOK 3 OF SURVEYS, PAGE 194 (MICHAEL SKROCH LS #27753)

This Minor Land Division
Is Approved for Recording
Date: 01-29-06
By: [Signature]
Pinal County Clerk of the Superior Court

SURVEY CERTIFICATE

I hereby certify that this survey was done by me or under my direct supervision, that this plat is a true and correct representation of that survey, and that all monuments shown were found or set accurately as indicated hereon.

Dated: 1/5/06

Taylor S. Hansen, R.L.S.
Registration No. 37512

Pinal County MLD# 05-0713



**Hansen
Engineering &
Survey L.L.C.**

PROFESSIONAL
ENGINEERS AND SURVEYORS

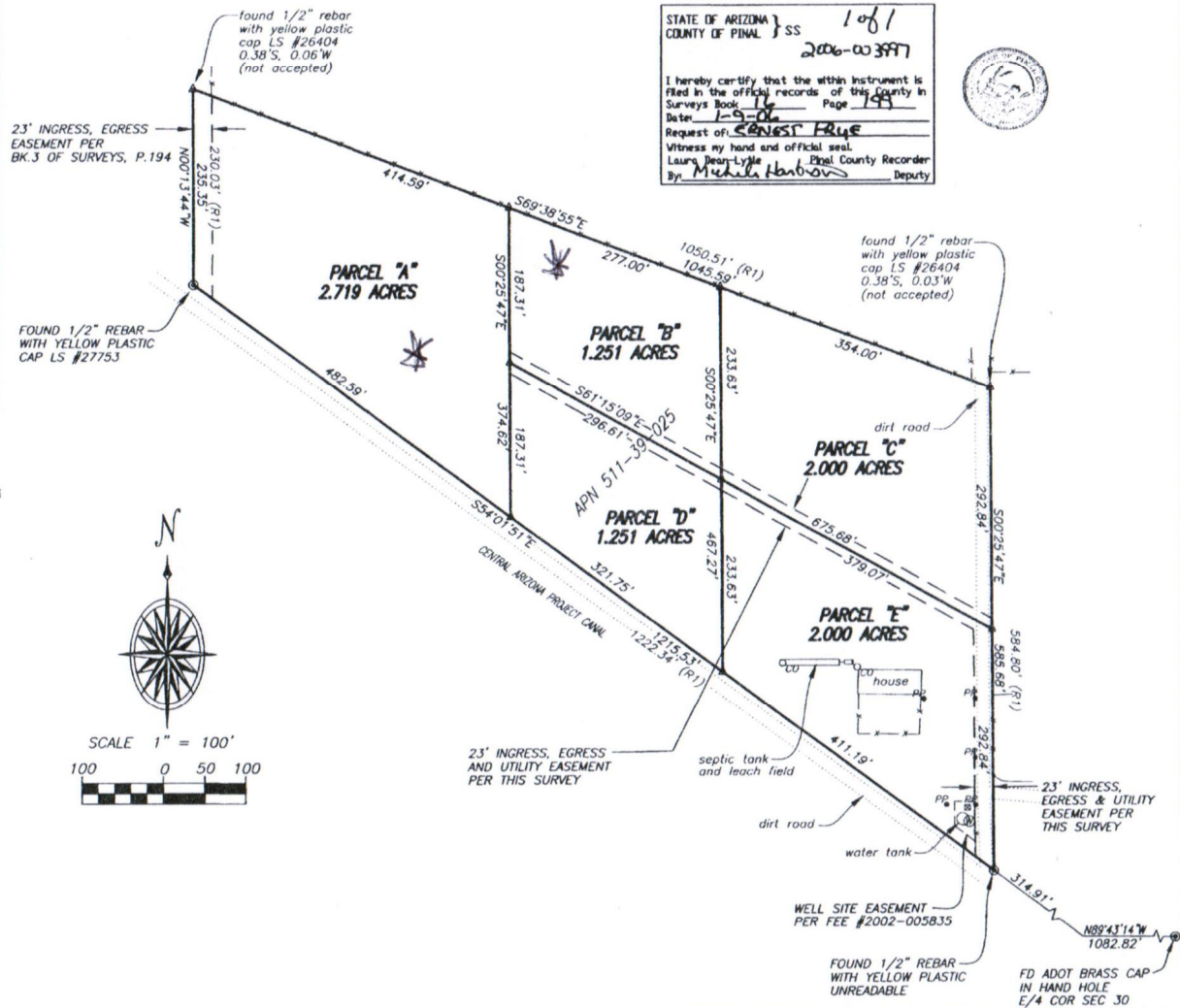
115 S. Main St.
COOLIDGE, AZ. 85228
(520) 723-3261
FAX (520) 723-3739

DATE: 11/05 DRAWN BY: CK DESIGN: REVIEW: TH
SURVEY: JJD/KH REVISED BY: REVISION No.

STATE OF ARIZONA } SS 1061
COUNTY OF PINAL } 2006-03997

I hereby certify that the within instrument is
filed in the official records of this county in
Surveys Book 16 Page 194

Date: 1-9-06
Request of: Ernest Frye
Witness my hand and official seal
Laura Jean-Lyle Pinal County Recorder
By: Michelle Harrison Deputy



**Ernest Frye
MINOR LAND DIVISION**

PARCEL 5 (B.3 OF SURVEYS, P.194) LOCATED IN SW/4,
NE/4, SEC 30, T7S, R6E G&SRM, PINAL, ARIZONA

DRAWING NO 050285

SHEET 1 OF 1