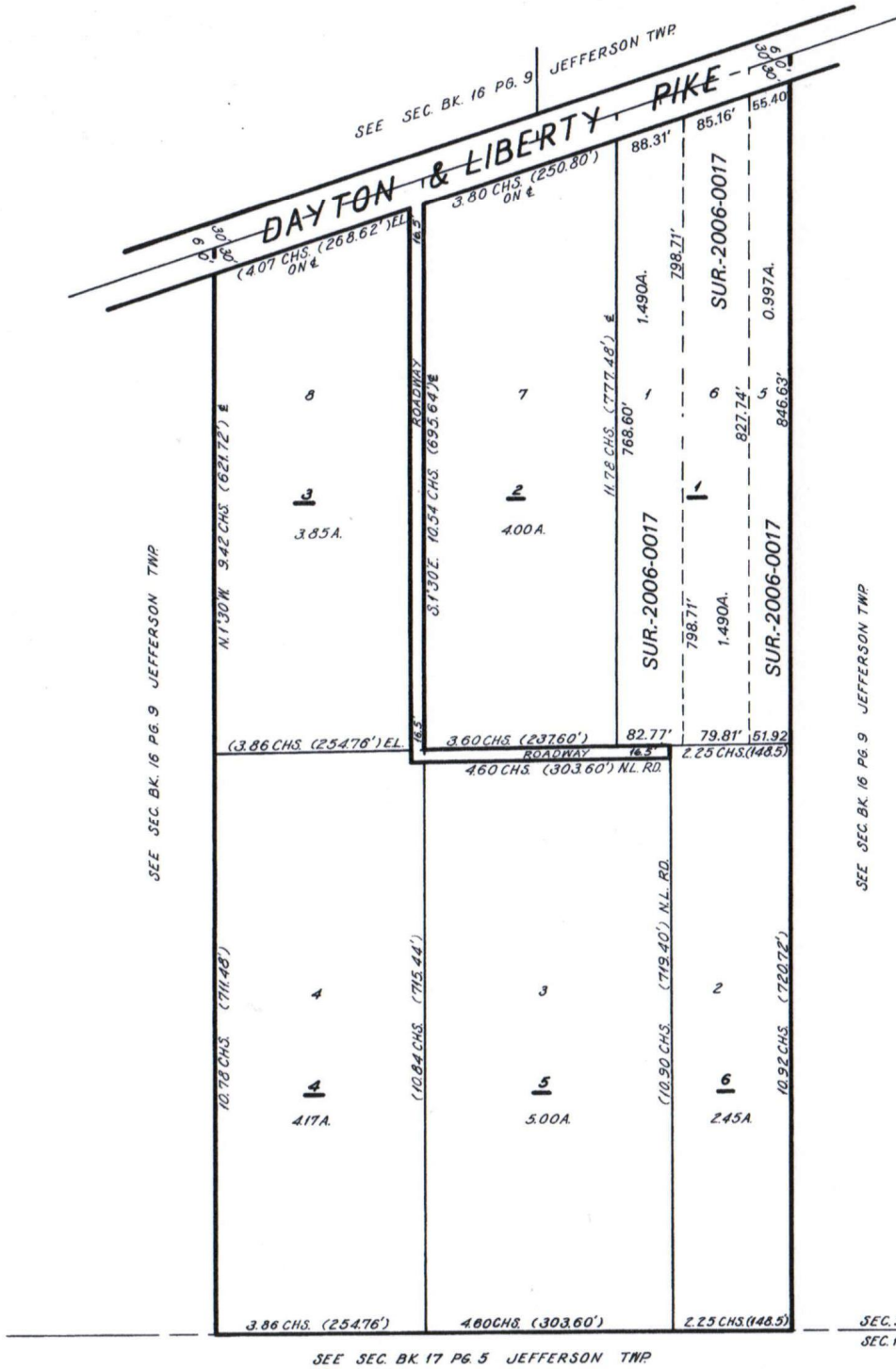


OBADIAH SCHENCK'S SUBDIVISION

SEC. 9, T. 3, R. 5, E. RECD PL. BK. "C" PG. 67 JEFFERSON TWP



JEFFERSON
102-20

JOHN D. WYSONG
 COUNTY ENGINEER
 1000 W. B. ...
 License # Ray Millard - 9-29-60

SCALE: 1" = 100'

SEC. 9, T. 3, R. 5, E. JEFFERSON TWP
SEC. 16, T. 3, R. 5, E. JEFFERSON TWP